

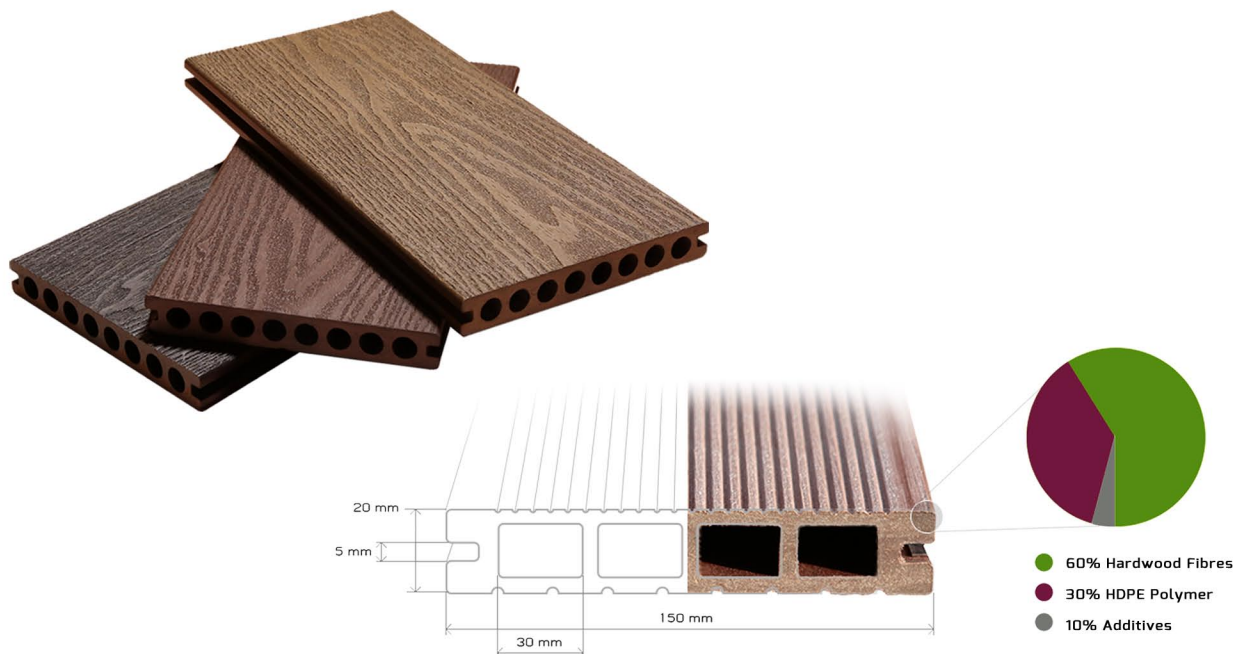
TIMELESS ELEGANCE



WPC DECKING

WPC DECKING

WPC Decking is the Ultimate Eco Friendly, durable and affordable alternate to natural wood decking. Manufactured from recycled hardwood fibres & high quality polymer resins, Leben Deck boards are truly a remarkable combination of nature and technology designed to offer the same aesthetic & physical properties of hardwoods with none of their drawbacks & limitations.



All Weather

Wpc decking is a range of 100% Water & Termite proof decking that can handle the most extreme weather conditions. It does not crack, buckle or splinter even under intense sunlight or harsh weather conditions which makes them the ideal choice for outdoor flooring for areas such as Pool sides, Patios, Balcony's, Roof Top's, etc.

Easy to Install

Simple & quick to install, wpc decking requires no heavy tools and can be installed within hours with just simple wood working tools. Concealed clips provide even spacing and lock each plank precisely into place to give a neat & clean finish.

Easy to Maintain

decking requires no painting, polishing or Oiling for years to come. It Doesn't decay or rot due to fungal or insect attack and can be easily cleaned using a high pressure jet or even simple washing does the job.

Economical

Wpc decking is not only durable and resilient but also significantly cheaper than Hardwoods such as Ipe and has no maintenance costs unlike real timber which needs oiling & polishing year after year.



Deep Emboss IPE Wpc
Decking Installed at Radisson Blue
Hotel, Paschim Vihar, New Delhi



Reversible Deck Boards !

Two Great Looks, On a Single Plank.

Some people prefer a natural wood grain, some may like a vintage look. Our composite deck boards offer both on a single plank!

One side is a realistic wood grain finish for a natural look, while the reverse is an old wood pattern for a worn off feel.

Reversible planks give you the power to choose the look that is right for you. And, of course, there's nothing stopping you from changing your mind in a few years time and flipping the boards over if you fancy a change.



DECK BOARD OPTIONS !



Color : IPE
Surface : Deep Emboss | Vintage Wood
Mould : Round Hole
Size Option : 10 Ft x 6 Inch x 20mm
8 Ft x 6 Inch x 20mm



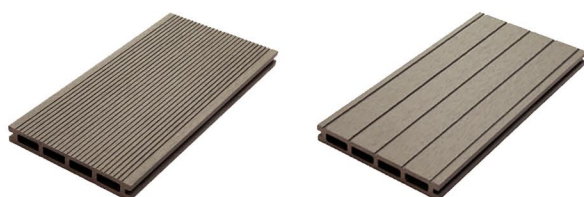
Color : Coffee
Surface : Deep Emboss | Vintage Wood
Mould : Round Hole
Size Option : 10 Ft x 6 Inch x 20mm
8 Ft x 6 Inch x 20mm



Color : Wine
Surface : Deep Emboss | Vintage Wood
Mould : Round Hole
Size Option : 10 Ft x 6 Inch x 20mm
8 Ft x 6 Inch x 20mm



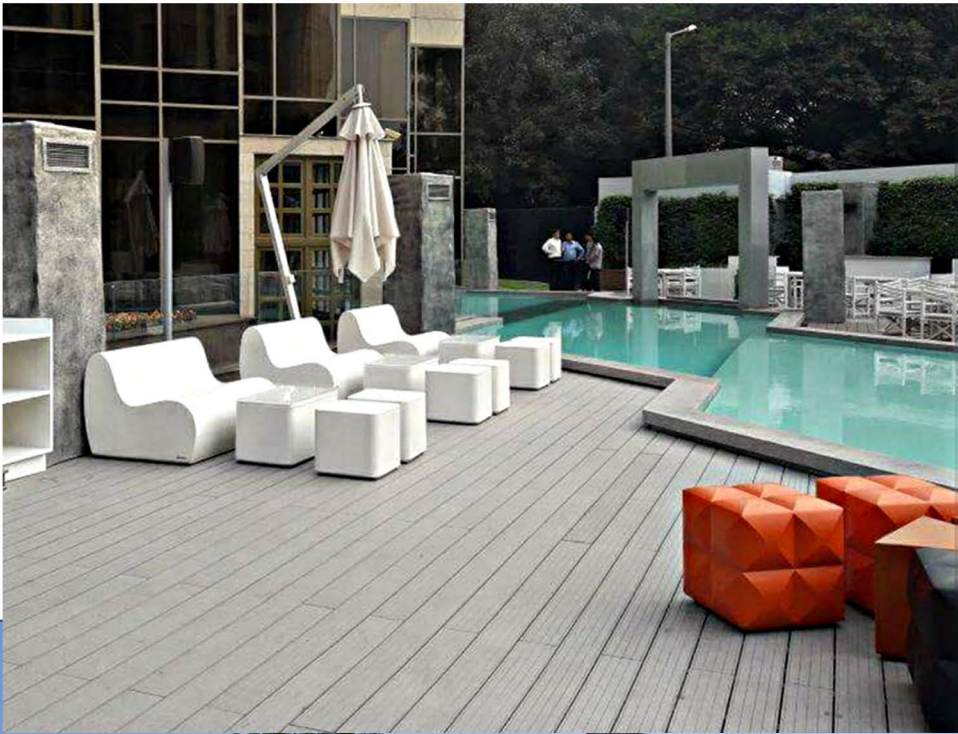
Color : Teak
Surface : Sanded Wood Grain | Small Groove
Mould : Square Hole
Size Option : 8 Ft x 6 Inch x 20mm



Color : Grey
Surface : Sanded Small Groove | Big Groove
Mould : Square Hole
Size Option : 8 Ft x 6 Inch x 20mm



Color : Chocolate
Surface : Sanded Wood Grain | Small Groove
Mould : Square Hole
Size Option : 8 Ft x 6 Inch x 20mm



Sanded Grey Wpc Decking Installed
at Hyatt Regency, Bhikaji Cama Place, New Delhi

ACCESSORIES



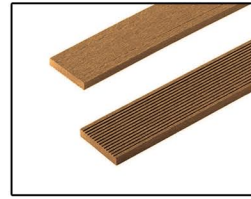
Nylon Deck Clip



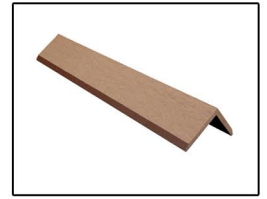
Steel Deck Clip



Starter Clip



Wpc Skirting



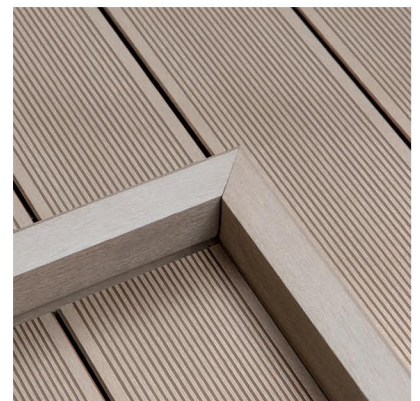
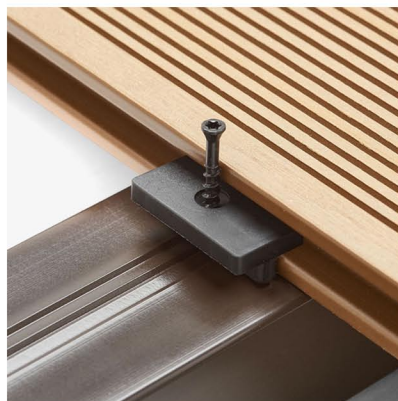
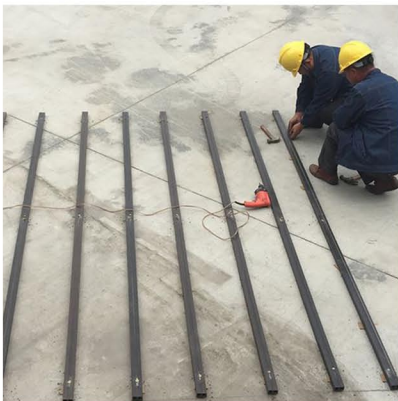
Wpc Edge Profile

INSTALLATION

composite decking is easy to install regardless of whether you're replacing a wooden deck or starting from scratch. Our grooved deck boards install with the easy clip system hidden beneath the decking, leaving a smooth, screw-free finish.

The easy clip system makes installation smooth and quick, no need to drive hundreds of screws through the planks themselves, just attach the clips and lock the planks together for a sturdy, effective deck.

We sell a complete range of accessories including deck clips, screws, skirtings and Edge profiles specifically designed for each range, offering a one-stop solution for your decking project.



TECHNICAL INFORMATION

Density	EN ISO 1183-1	1200 Kg/m ³
Flexural Strength	EN ISO 178:2003	33.7 Mpa
Modulus of Elasticity	EN ISO 178:2003	2500 Mpa
Tensile Strenght	EN ISO 527:1996	23.2 Mpa
Hardness	EN 1534:2002	68 N/mm ²
Water Absorption	EN 317:1993	1.2% (24h)
Fire Classification	EN 13501-1:2009	CFL- S1
UV Fade Resistance	ASTM G154-16	Grey Scale 4
Slip Resistance	EN 13036-4:2011	25-35 PTV
Load Capacity	Joist Spacing 350mm C/C	350 Kg/m ²

All technical information furnished in the above table is indicative and based on the information received from our manufacturers through tests conducted by SGS and other renowned test laboratories. Values of Test Results will vary from batch to batch depending on the product composition, technological modifications & test methods. LEBEN is not liable for any variations in the values as indicated above and reserves the right to modify product composition as required from time to time.



other
Products !
we offer



SPC Flooring



Laminate Flooring



3D Wall Panels



WPC Louvre Panels



PVC Wall Panels



Exterior Cladding



WPC Timber Tubes



WPC Baffle Ceiling